

ASME AIR SEPARATORS



ASW / ASL Series

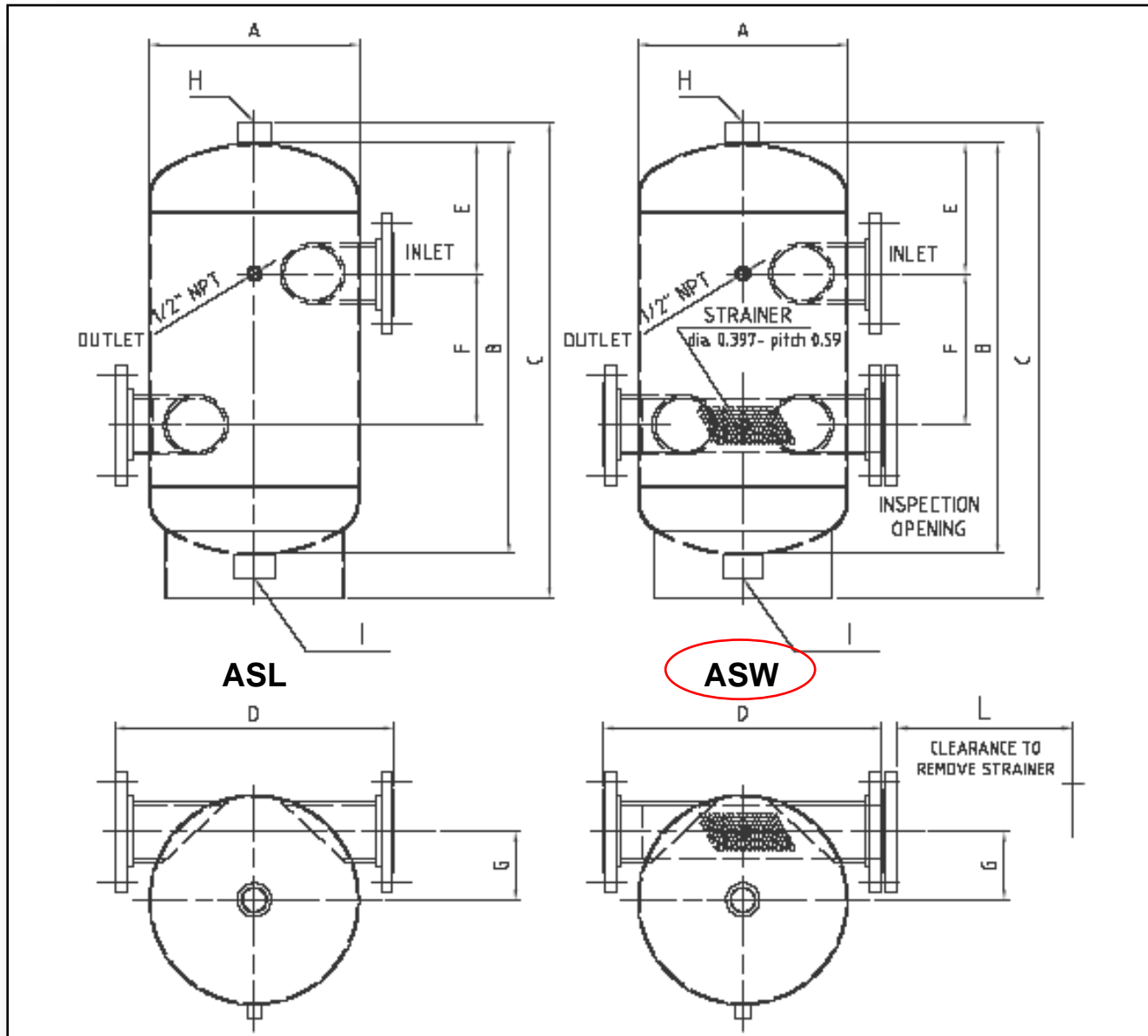


ASME AIR SEPARATORS



ELBI's air separators are designed according to the ASME CODE Section VIII – Div. 1 using the latest technology in terms of manufacturing processes and quality control.

Available in 125/ 150 psi maximum working pressure. Intended for use in hydronic / chilled water systems, these air separators are intended for removal of entrapped air in hydronic and plumbing systems.



ASW / ASL SERIES OF AIR SEPARATORS

STANDARD FEATURES AND BENEFITS:

- ASME CODE SECTION VIII, DIV. 1 – UM STAMPED; U STAMPED
- Max working pressure: 125 psi (150 psi up to ASL/ASW-050)
- Max working temperature: + 375°F (+ 190°C)
- Carbon steel construction
- Removable heavy duty AISI 304 stainless steel strainer (ASW Series only)
- FINISH: "automotive" grey finish paint.



DIMENSIONAL DATA

ASW = WITH STRAINER	A	B	C	D	E	F	G	H	I
ASL = LESS STRAINER	IN.	IN.	IN.	IN.	IN.	IN.	IN.	IN.	IN.
ASW/ASL-020T	13.8	21.8	26.3	19.3	6.7	8.5	5.0	1.1/2"	1"
ASW/ASL-025T	13.8	21.8	26.3	19.3	6.7	8.5	4.8	1.1/2"	1"
ASW/ASL-030	13.8	21.8	26.3	21.2	6.7	8.5	4.8	1.1/2"	1"
ASW/ASL-040	15.8	30.7	35.6	21.7	10.0	10.8	5.1	1.1/2"	2"
ASW/ASL-050	15.8	30.7	35.6	21.7	10.0	10.8	4.6	1.1/2"	2"
ASW/ASL-060	19.7	43.1	48.0	28.0	13.3	16.5	5.9	1.1/2"	2"
ASW/ASL-080	19.7	43.1	48.0	28.0	13.3	16.5	4.7	1.1/2"	2"
ASW/ASL-100	31.5	63.4	67.7	41.0	21.1	21.3	9.4	2"	2"
ASW/ASL-120	31.5	63.4	67.7	41.0	21.1	21.3	8.3	2"	2"
ASW/ASL-140	37.4	81.1	85.2	46.5	24.4	32.3	10.8	2"	2"
ASW/ASL-160	47.3	98.4	108.5	56.3	30.1	38.2	12.0	2"	2"
ASW/ASL-180	55.0	110.2	120.0	64.2	33.3	43.7	14.2	2"	2.1/2"
ASW/ASL-200	61.0	133.0	142.6	72.0	39.0	55.1	16.5	2"	2.1/2"
ASW/ASL-240	65.0	193.7	204.0	84.3	43.7	106.3	15.6	2"	2.1/2"

TECHNICAL DATA

ASW = WITH STRAINER	IN / OUT	CAPACITY	OPENING	WEIGHT ASW	WEIGHT ASL
ASL = LESS STRAINER	INCH	GALLON	INCH	LBS.	LBS.
ASW/ASL-020T	2"	12.0	2"	72	64
ASW/ASL-025T	2" 1/2	12.0	2" 1/2	76	67
ASW/ASL-030	3"	12.0	3"	109	82
ASW/ASL-040	4"	22.6	4"	152	116
ASW/ASL-050	5"	22.6	5"	166	125
ASW/ASL-060	6"	50.0	6"	300	232
ASW/ASL-080	8"	50.0	8"	397	283
ASW/ASL-100	10"	189.0	10"	763	569
ASW/ASL-120	12"	189.0	12"	902	637
ASW/ASL-140	14"	330.0	14"	1,429	1,058
ASW/ASL-160	16"	666.0	16"	2,136	1,678
ASW/ASL-180	18"	1,012.0	18"	3,000	2,423
ASW/ASL-200	20"	1,507.0	20"	4,508	3,695
ASW/ASL-240	24"	2,560.0	24"	5,816	4,910

AIR VENT

For automatic air removal, we recommend adding our high capacity air vent part #CIA-075

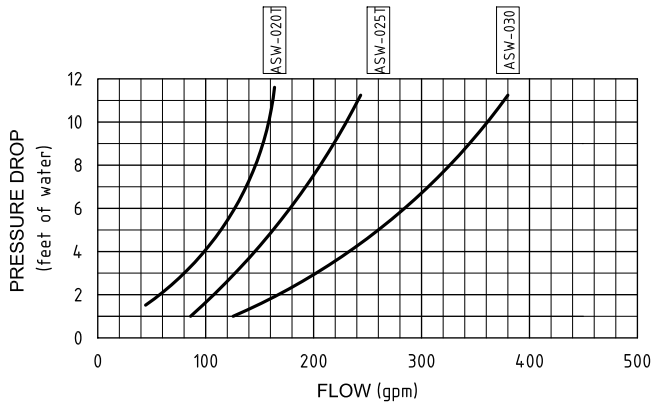
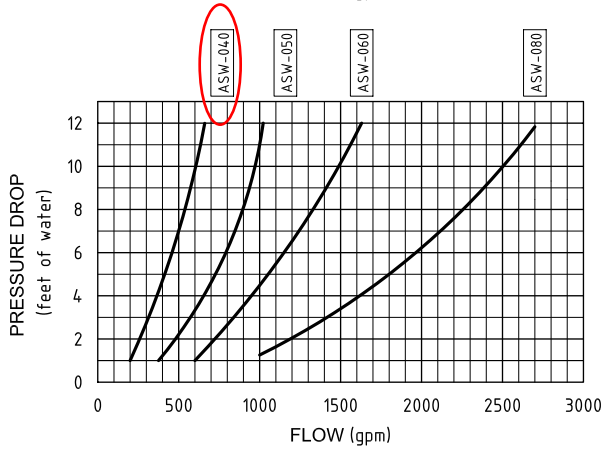
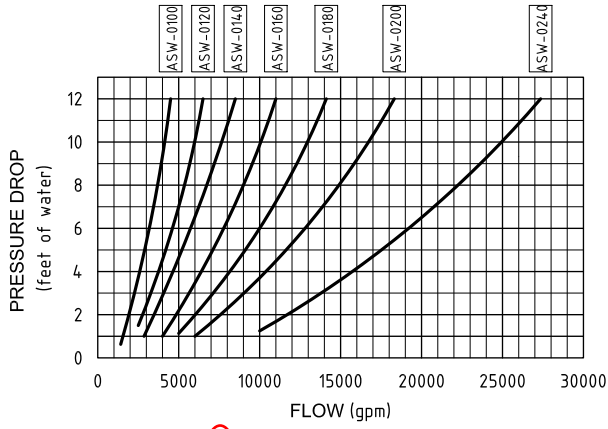
Description:

- Cast Iron Body and cover
- Stainless steel internal float and assembly

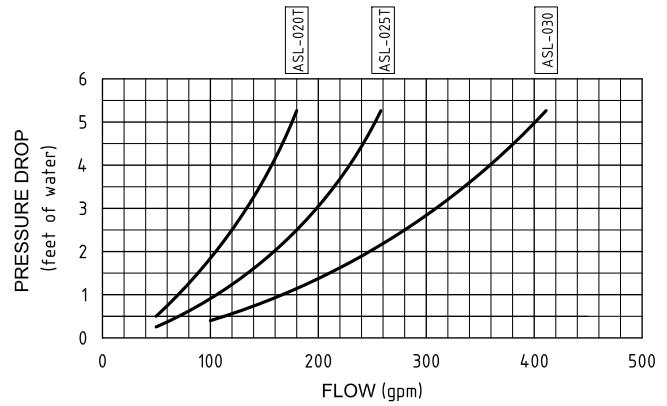
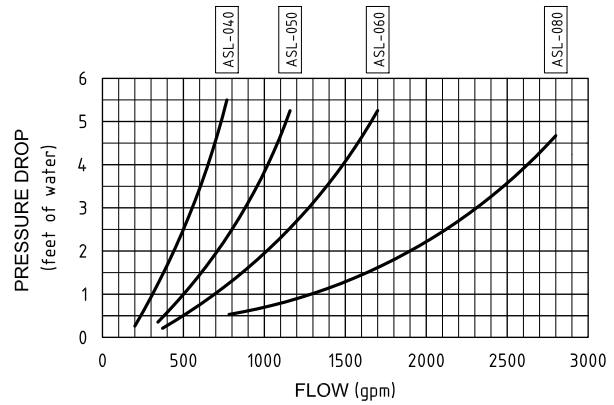
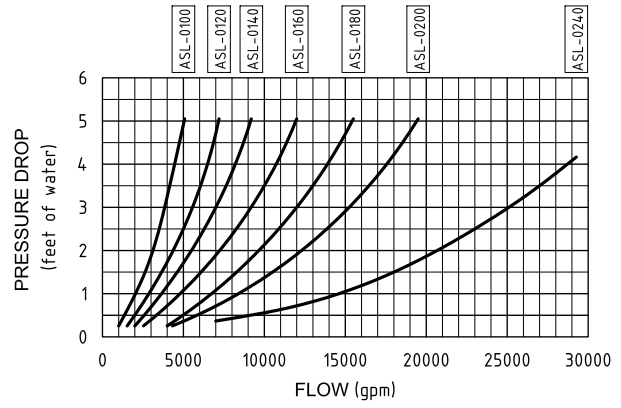
PART NUMBER	HEIGHT	WIDTH	INLET	OUTLET	WEIGHT
CIA – 075	5 1/2"	4 1/2"	3/4"	3/8"	5 lbs.

PRESSURE DROP:

ASW Series



ASL Series



Elbi of America, Inc.
525 Mc Carty Street,
Houston TX 77029
elbi@elbi.net
www.elbi.net

